

DUAL CHEMICAL ENCLOSURE - USP

The dual chemical enclosure is a perfect combination of value and functionality. Designed for radioisotope manufacturing, the DCE consists of stacked compartments that can hold most of currently available synthesis models. The DCE has 75 mm of lead shielding in all direction and between the upper and lower compartments. It has multiple shielded pass-troughs into both compartments for data cables, utility lines and cyclotron target lines. The electrical control box is mounted on the lower front side of the hot cell. The DCE can also be added to existing hot cell configurations for expanding radioisotope production capabilities.

In comparison to the standard DCE, the USP model is more airtight and has individual air inlets and exhausts. The air inlet is fitted with a HEPA filter. Several options such as lead glass windows, gas connections, internal back shields and analogue pressure gauges are available.

Model VG-DCE-USP

KEY FEATURES

- Air quality: ISO-7 according to ISO 14644-1
- Small foot print
- Steel structure built to support all components, lead is not used for any structural support
- Highly configurable options
- Fully extractable tray

COMPACT DESIGN

**AIR QUALITY: ISO-7
ACCORDING TO
ISO 14644-1**

**KEY LOCKED
DOOR**

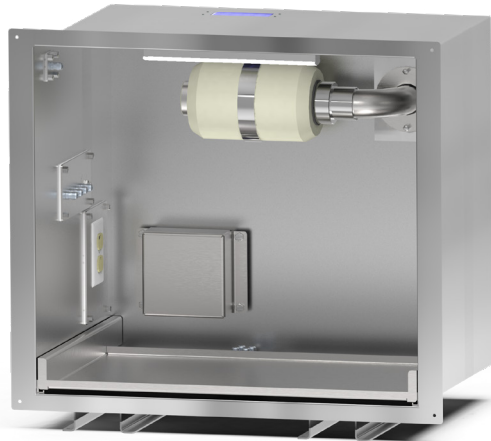
**FULLY EXTRACTABLE
TRAY**



YOUR GUARANTEE FOR QUALITY. FOR SURE.



**VON GAHLEN
FOR SURE**



OPERATOR / PRODUCT SAFETY

- 75 mm / 3 inch lead shielding in all walls, roof and floor
- Smooth interior finish
- Internal stainless steel box 316L
- Steel structure built to support all components, lead is not used for any structural support

TECHNICAL DATA

- Outside dimensions: $\pm 1000*1010*2200$ mm / 40*40*87 inch (W*D*H)
- Inside dimensions: $\pm 685*510*610$ mm / 27*20*24 inch (W*D*H)
- Door opening: $\pm 685*610$ mm / 27*24 inch (W*H)
- Air inlet: DN50 with external HEPA filter, including valve
- Air outlet: DN50 including valve
- Air exhaust: max 5 m³/h / 3 CFM per compartment
- Air quality: ISO-7 according to ISO 14644-1
- Exterior smooth finish: traffic white (RAL 9016), easy to decontaminate
- Power connection in accordance with local requirements
- Total weight: ± 6.580 kg / 14,500 lbs

OPTIONS

- Lead glass window $\pm 150*150$ mm / 6*6 inch (W*H) in front doors, 75 mm / 3 inch lead equivalent
- Basic gas connections: three technical gasses and one compressed air
- Airtight feed trough for customer cables
- Extended gas regulation
- Digital pressure gauge instead of analog gauge
- Internal HEPA/Charcoal exhaust filter
- External HEPA/Charcoal exhaust filter including 25 mm / 1 inch lead shielding
- Internal back shields for air inlet and -exhaust
- External back shields for air inlet and -exhaust, installation depth: + 55 mm / 2 inch
- Radiation detection system
- Extended cover plates to specified height

FUNCTIONS

- Sliding stainless steel tray: $\pm 649*394$ mm / 26*15 inch (W*D)
- Max useful height on tray is 575 mm / 22^{1/2} inch (H)
- Analog gauge for displaying the internal pressure
- LED internal light fixtures, switchable from front
- One duplex electrical outlet inside hot cell, per compartment
- Electrical control box mounted on the lower front side of the hot cell
- Fully shielded target lines from floor level to hot cell, 75 mm / 3 inch lead



MORE INFO?
Please contact
sales@vongahlen.com
Or visit
www.vongahlen.com

